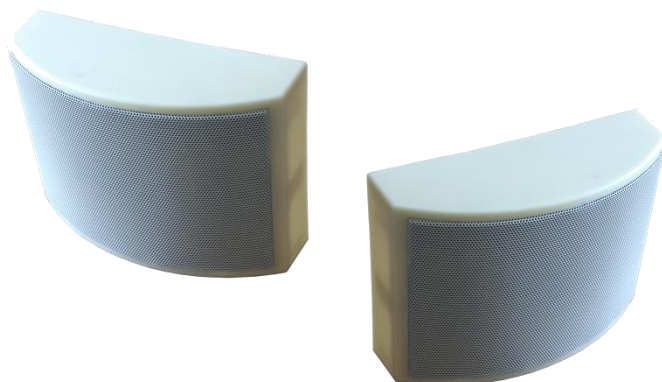
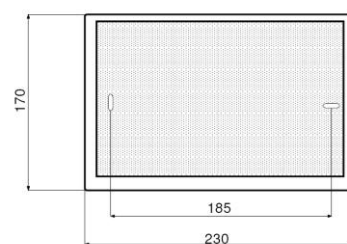
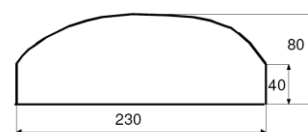


EN 54 - 24 Certified



- Modern and clean design
- Small dimensions
- Sound quality
- Easy and quick installation

The **Design230-EN5424** is a wall-mounting enclosure-type sound broadcaster. Its carefully studied design ensures easy installation and discreet integration. It is therefore the solution in all applications where size is important. Offering high public address sound quality while providing voice alarm facilities too, it can be used in any type of environment.



Features

Loudspeaker	Ø 12 cm	
Powers	6W nominal	6 - 3 - 1,5 W
Frequency band		80 Hz - 15 kHz
Sensitivity	1W / 1m 6W / 1m	98,5 dB 104,5 dB
<i>EN54-24</i>	<i>Pink noise 1W / 4m Max 6W / 4m</i>	77,1 dB 87 dB
-6dB openings	500Hz 4kHz	130° 70°
Dimensions		230 x 170 x 80 mm
Color		White
Material	Metal grid	ABS
Weight		1,2Kg

Applications

Voice Alarm system.....

Music.....

Speech.....

- Waiting rooms
- Restaurants
- Shops
- Car parks
- Corridors

NB : : As per the norm, the use of VA—casing is necessary